



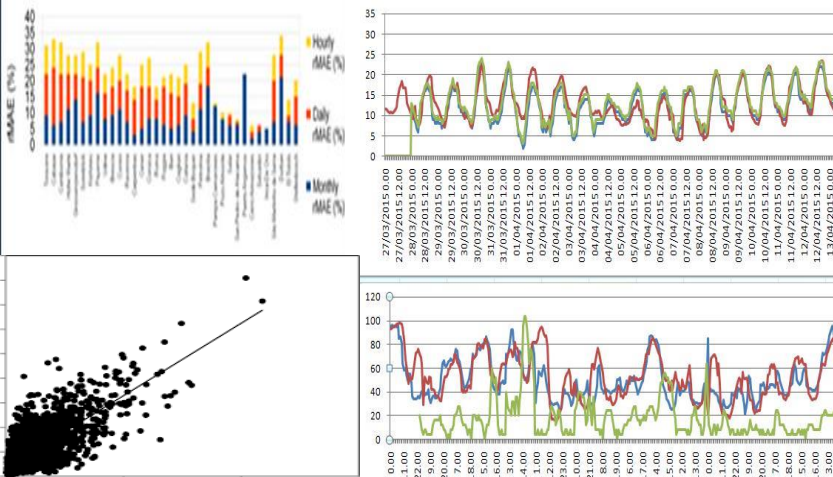
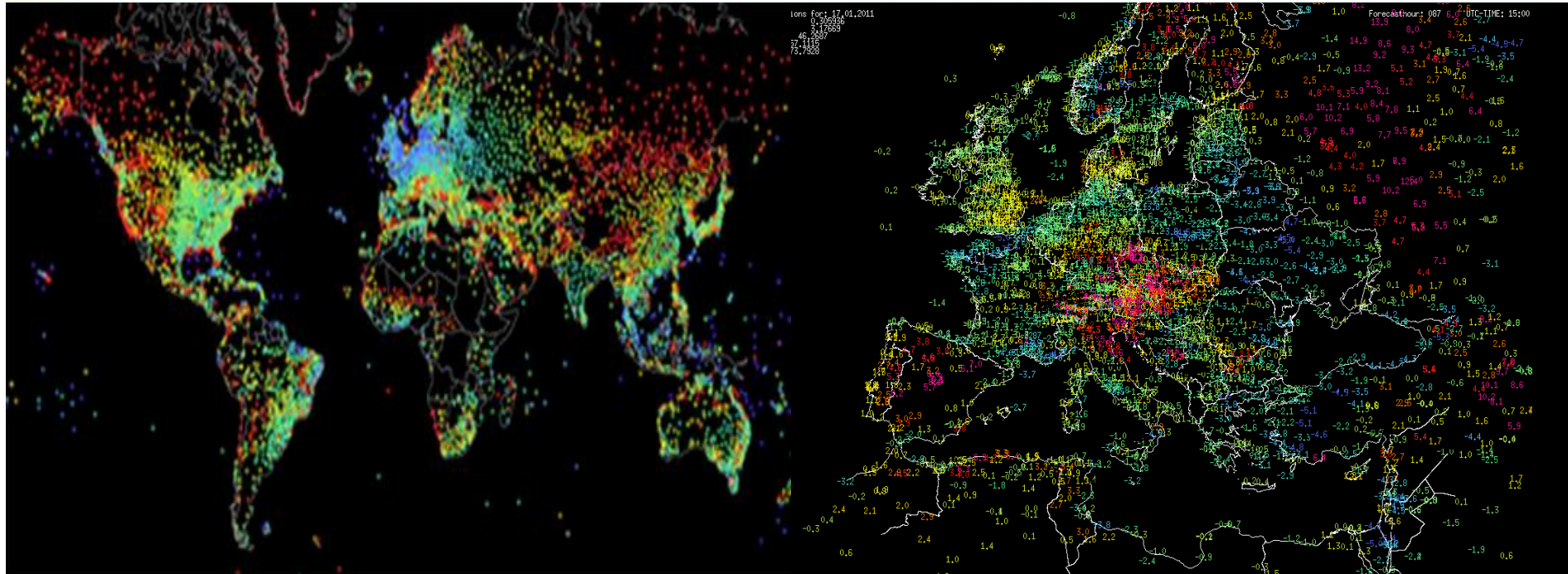
**DATAMETEO YOUR WEATHER PROVIDER**

**Weather forecast applications**

**Datameteo powered by LRC Servizi Srl Via Piave 4/c 12022 Busca Italy VAT ID IT03358090045**

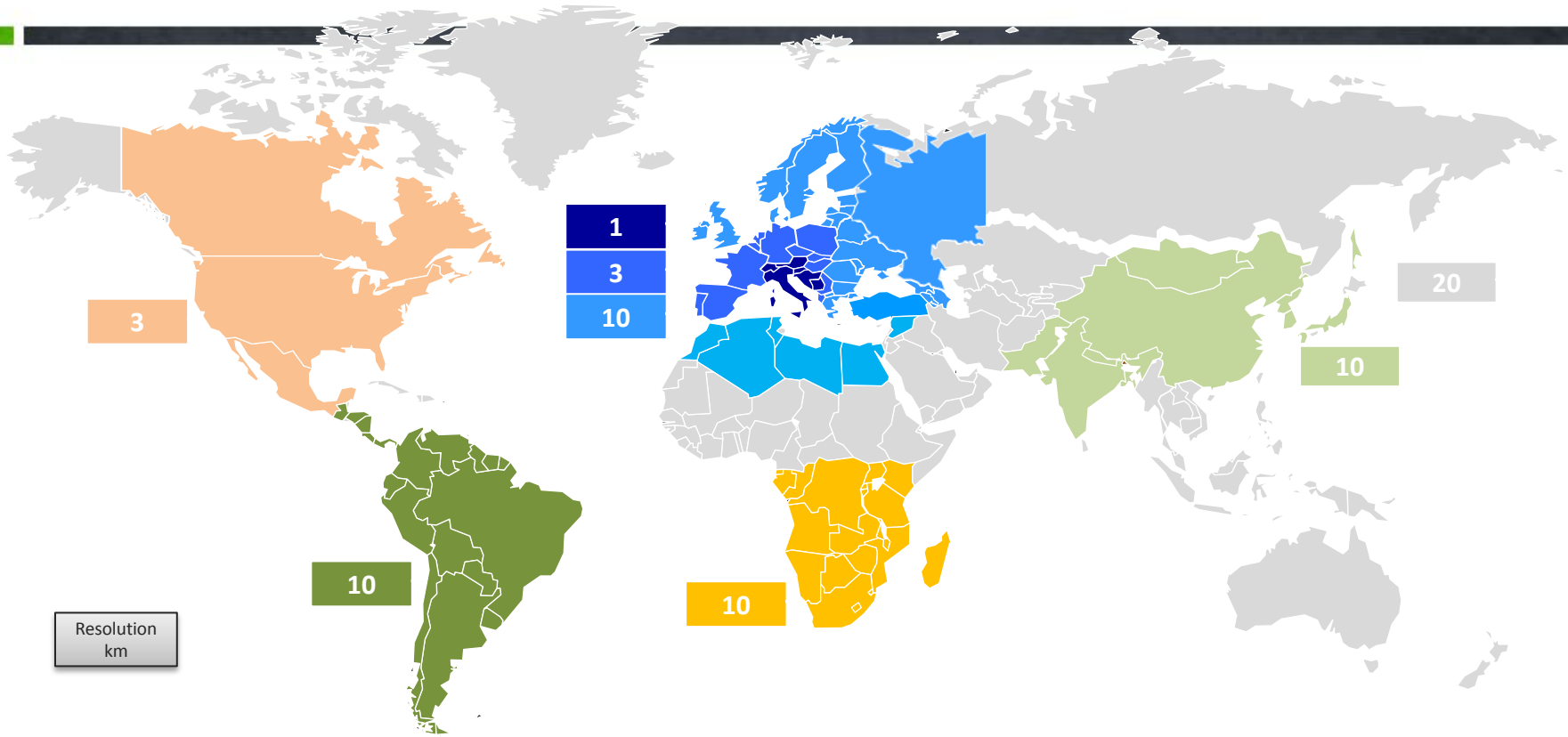
**Ph:+39 0171/943284 e-mail:info@datameteo.it web:http://www.datameteo.com**

# Actual Data and Quality Check Platform

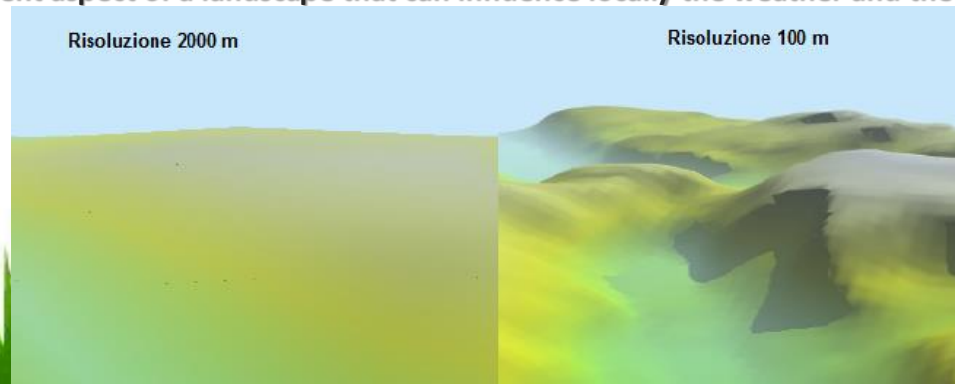


- More than 17000 weather station ingested worldwide
- Quality data check performed by a Validator tool in house builded
- The validator apply the most recent WMO specifications ( validity data checks , spatial consistency checks etc..)
- Additional cross platform checks has been added ( data check range for area , altitude station location down/upscaling check etc..)
- Additional spatial consistency check using the overwritten high resolution weather forecasted historical archives for selected parameters
- MAE, RMSE, R2 values detected and shown in tabular, maps or diagrams

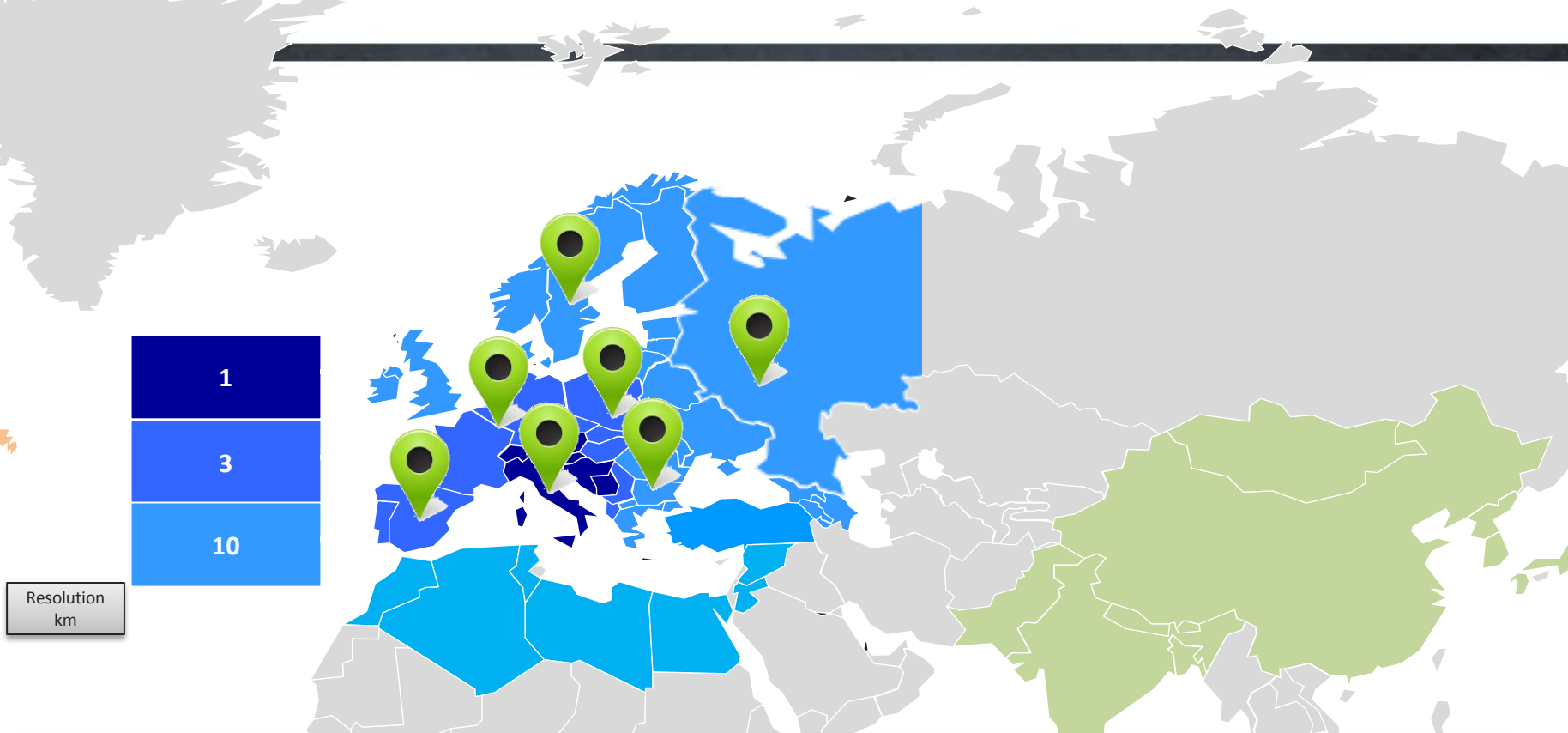
# WORLDWIDE HIGH RESOLUTION WEATHER MODELS



**Resolution is defined as the distance in Km from one grid point to the nearest. In simple word it means how a weather model see the different aspect of a landscape that can influence locally the weather and the climate.**

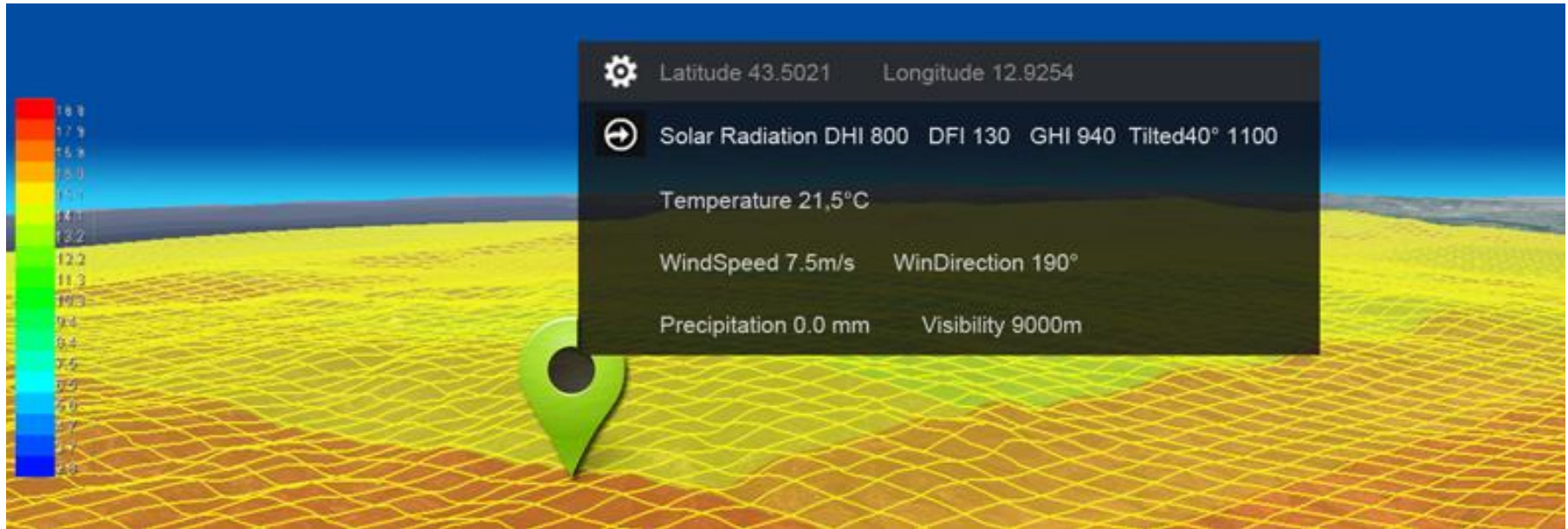


# THE RIGHT HIGH RESOLUTION WORLDWIDE



- **Quality** forecast available worldwide irrespective of whether a meteorological recording station exists or not based on **WRF** (Weather Research Forecast) **EMM** and **NEMS** model
- **Scaled** model domain best fit grid resolution at **1, 3, 10, 20 Km** up to **4 updates a day**
- **Numerical** predictions based on multi model or Ensemble approaches in selected areas with calibration via Statistical MOS, Neural network to show **forecast uncertainty**
- **Now casting up to 6 hours** forecast via validated **actual, satellite, lightning** feed correction
- **Verification** benchmark and model monitoring forecast vs measures coming from ground weather stations network

10



- **Simple** weather forecast managing via Latitude and Longitude
- **Actual** data from weather station, satellite data real time integration
- **Base Forecast** : the best state of the art of our weather models
- **Advanced Forecast** : your unique accurate forecast using measures\*
- **Easy** to integrate CSV, Json API, XML FTP secure outputs delivery

\*postprocessing using measures coming from validated feed ( ground stations, satellite, lightning)

## Multispectral and multiplatform sat and Lightning nowcasting high refresh time tool

The storm tracking uses the multispectral algorithm with sat and lightning data dissemination :

- the 5,6 and 9 sat channels
- 7.3-10.8>0: cloud base detection (early detection)
- 6.2-10.8>0: cloud top detection
- Movement and shape prediction algorithm
- Object trajectory identification and Stage definition:

Triggering Growing Mature Dissipating

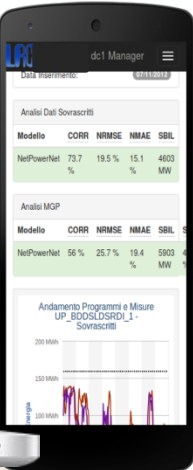
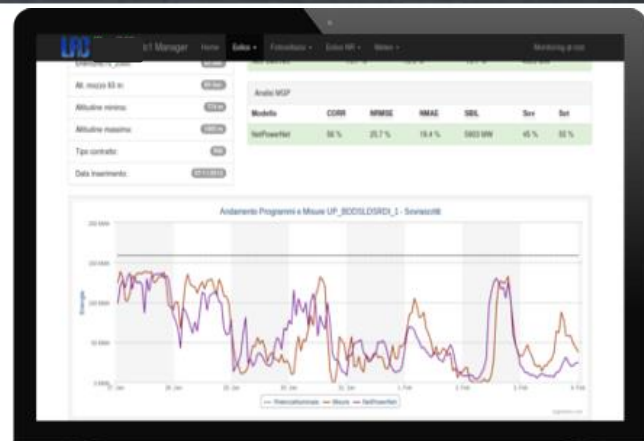
- Regular sat grid resolution at least 3 Km
- Double source independent algorithm
- Fully interface with existing lightning networks
- Validated outputs to detected early warnings (thunderstorms, hail, heavy rain, strong winds)

- Shape Convective Area
- Shape Lightning Area
- Convective potential and motion
  - Min CH9 Sat Temperature
  - Alerting Potential
- Additional Lightning and/or Sat info



# White Label Web Monitoring Data Application

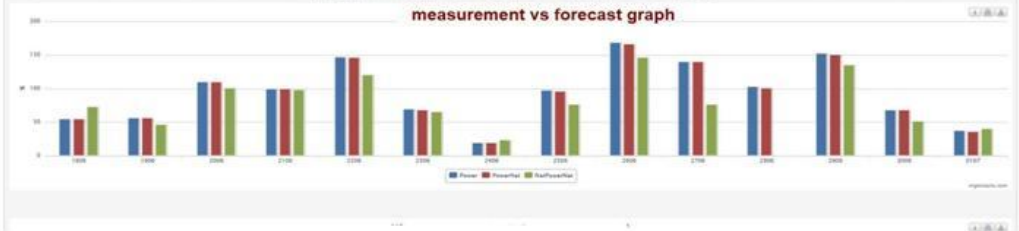
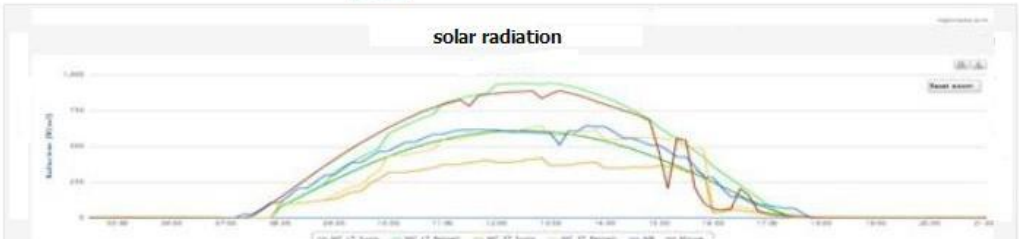
Our web monitoring is the new **realtime web monitoring platform** designed for business operators, available worldwide! Our fast servers **are accessible 24/7** via a secure web portal, no matter where you are!  
**The platform can be tailored on the customer needs (logo, layouts, features).**



Nome	Status	Altre Info
Impianto 1	OK	1000
Impianto 2	OK	1000
Impianto 3	OK	1000
Impianto 4	OK	1000
Impianto 5	OK	1000
Impianto 6	OK	1000
Impianto 7	OK	1000
Impianto 8	OK	1000
Impianto 9	OK	1000
Impianto 10	OK	1000

Parametro	Valore
energia UP	8000
energia fotovoltaica	4500
energia solare	4500
energia eolica	4500
energia idroelettrica	4500
energia geotermica	4500
energia biomassa	4500

Modello	CORR	NRMSE	HMAE	SBIL	Dev	Set
NetPowerNet	56 %	25.7 %	19.4 %	5903 MW	45 %	55 %



# MeteoBrowser GIS Interactive Weather

PHP relational databases webaccess fully customizable weather layers GIS application

